

---

---

# STUDEBAKER Spotlight



OFFICIAL PUBLICATION  
OF THE LONG ISLAND  
CHAPTER, SDC

---

---

Volume 6, Issue 9 – September 2013

## Current Officers 2013

### President

Carl Carilli

5507-10 Nesconset Highway, Mt. Sinai, NY  
(631) 416-1446

### Vice President

Kevin Healion

Kevin@CenturyTennis.com

### Secretary

Roger Price

5 Lindron Ave, Smithtown, NY (631) 724-1382

### Treasurer

Frank Sammon

105 Ridge Ave, No. Great River, (631) 348-7681

### Membership Secretary

Frank Sammon

105 Ridge Ave, No. Great River, (631) 348-7681

### Newsletter Editor

Cathy Sammon

[glesam@optonline.net](mailto:glesam@optonline.net)

Visit us at: [www.longisland-sdc.com](http://www.longisland-sdc.com)

## Next Meeting:

**Thursday, September 19th at 7:30 p.m.  
Marjorie Post Park Community Room**

## PRESIDENT'S CORNER



Hello to all,

At our last meeting, a significant amount of time was dedicated to the topic of determining which cars qualify for admission to our show. Numerous suggestions were brought forward, and discussed at length. After the meeting, Tom Portesy and I reviewed the points which were broached.

As always, I eagerly listened to Tom's input and recommendations, and I have formulated what I believe to be a viable set of guidelines for next year's show. I would like to present them at our next meeting, and respectfully request that all of you attend so that we can vote on this revised plan.

On another note: I bet it's been awhile (perhaps a very long time) since you received service at an automobile-related facility where, both during and after the event you said to yourself, "Wow, these people really care about my satisfaction!" I have discovered such a facility. The Goodyear Autotech shop located at 610 Middle Country Road in St. James (telephone 631-724-1110) is clearly dedicated to customer satisfaction. The owner (John) and his staff and mechanics were so friendly, courteous and

## MEETING INFORMATION

**Third Thursday of every month**

**7:30 p.m.**

**Community Room**

**Marjorie Post Park**

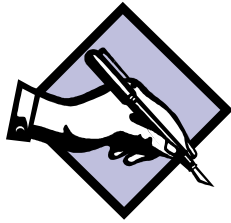
**Massapequa**

**New members welcome!**

competent, I was taken aback. I needed to have new tires (custom-made for me, and therefore, purchased elsewhere) installed on my vehicle, and John and the mechanic assigned to the task (Bob) took excellent care of me, and at a fair price. I recommend this shop to all of you without reservation. You will be more than satisfied.

Hoping to see you at our next meeting,  
Carl Carilli, President  
Long Island Chapter, Studebaker Drivers Club

## **AUGUST MEETING RECAP**



Our meeting opened with the Pledge of Allegiance to the Flag at 8:05 P.M.

I read the July meeting recap. The recap was accepted by Tom Portesy, and seconded by Randy Lessner.

### **TREASURER'S REPORT:**

Treasurer Frank Sammon reviewed all expenses since the July meeting. These included expenses for the newsletter and refreshments.

Income included refreshments, 50/50, car show vendor charges, dues and interest on the checking account. Frank also gave us the checking and savings account balances.

Accepted by Dave Evans, and seconded by John Warnock.

### **OLD BUSINESS:**

We followed up on our discussion pertaining to what actually determines an orphan car. Mike Neumar expressed his opinion that the Corvair Club should not be part of our Reunion Sunday, since they now have their own show at Marjorie Post Park. We did allow them to join us a couple of years ago when they lost their car show venue. Tom Portesy eloquently told us that, years ago, we grandfathered in the Corvair Club to attend our show. It was agreed that they could come to our show, but would not be eligible for our awards.

We also agreed that, for our purposes, an orphan car is a car from an auto manufacturer or a division that no longer exists. For example, a 25 year old Pontiac, Oldsmobile or Mercury would be eligible, but a model of a specific maker, such as a BelAir would not. This was the suggestion of Jerry Duff. Randy Lessner suggested that the 25 year rule should not apply. It was the feeling of the members, in the room, that we should keep the 25 year rule.

Tom reported that the Sayville Summerfest was a big success with about 200 cars in attendance.

### **NEW BUSINESS:**

Molly Malone's is now open. We decided to have our annual Holiday Brunch there. Bob Andreocci will make the reservation.

The proposed date is Sunday, December 15<sup>th</sup> with an alternate of December 1. As in the past, a member and spouse or significant other will pay \$10 per person. Other attendees will pay the full cost. The club will pick up the rest of the bill.

### **OUR PICNIC:**

Our annual picnic will take place on Sunday, September 8<sup>th</sup> at Belmont Lake State Park. Tom reported that he has already purchased the charcoal, barbeque tools, horseshoes, etc. I asked if we can have onions for the hamburgers. Tom asked us to arrive around 10 A.M. to get a good parking space for our Studebakers. As in the past, our club will provide hot dogs, hamburgers, chips, condiments, onions and cheese. Everyone is encouraged to bring anything else that they may desire.

### **UPCOMING EVENTS:**

This Sunday, August 18<sup>th</sup> is the annual VCR auto show at the Vanderbilt Museum in Centerport. September 15<sup>th</sup> is the Smithtown Heritage Country Fair. As in the past, all attendees who arrive in their vintage autos will be admitted at no charge. The entrance to the field is east of Rte. 111 on Rte. 25. The field is located on the north side of Rte. 25 at a white picket fence. Someone will be there to guide you. Try to arrive by 9:30 A.M.

Coming in 2014 is the Studebaker National Meet in Dover, Delaware. Watch for information in *Turning Wheels*.

The Corvair Club has invited us to attend their show at Marjorie Post Park on Saturday, September 21<sup>st</sup> from 9 A.M. to 3 P.M. Flyers were presented at our meeting. Vic, an officer of the Corvair Club, brought in photos taken at the Studebaker National Museum.

### CAR STUFF:

Lanning Baron brought in an ad for a '64 G.T. Hawk for \$1,000. It has a 289 cubic inch engine. It's a complete car that can be used for parts. For more information, call 570-455-6162. The car is located in Pennsylvania.

The 50/50 was won by Lanning Baron, who donated his winnings back to the club.

Our meeting adjourned at 9:10 P.M.

Roger Price  
Recording Secretary

## UPCOMING EVENTS

- **Long Island Chapter Picnic** – September 8<sup>th</sup> at Belmont Lake State Park. Arrive around 10:00 a.m. to get a great parking spot.
- **Chapter Holiday Brunch:** We will be holding the brunch at Molly Malone's again this year, as they have completed repairs from Hurricane Sandy. Date is being finalized and will be in the next issue.

## BLAST FROM THE PAST

Kurt Larsen passed on a couple of interesting Studebaker-related articles that he found in Reminisce magazine. In this day of "Supersizing" meals, we can look back on these photos from the 1920's and see that the concept is not really a new one. Thought everyone would enjoy taking a look at these!

Thanks, Kurt, for passing on a tidbit of Studebaker history!

### **Super-Sizing a Stude**

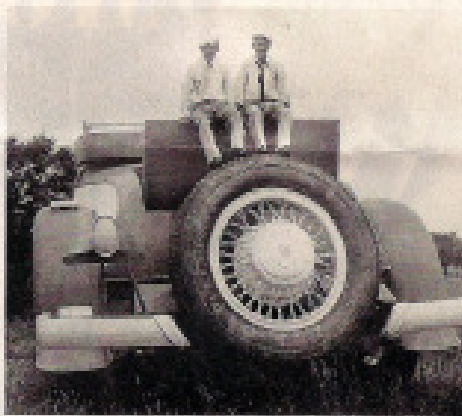
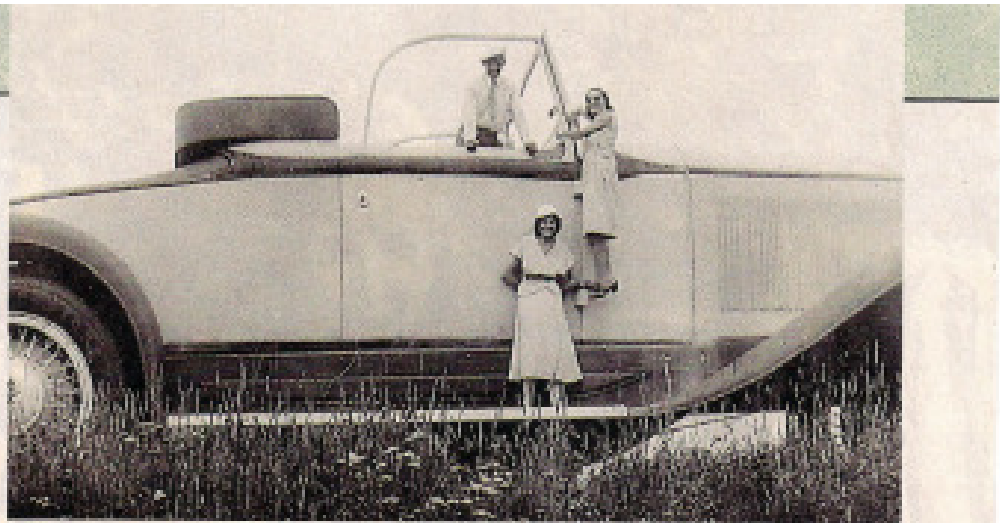
THIS CAR (right) must have been a promotional specialty for the Studebaker car company, as indicated by the distinctive S on the hubcap. I wonder if anyone recalls giant cars like this one.

The women pictured are Emily Kowalski (wearing brimmed hat) and Irene Wozniak. The men are Henry "Hank" Wozniak (without tie) and a man I cannot identify.

These photos from the late 1920s came out of the Wozniak family album. I married a Wozniak, and shortly after these photos were taken, Emily married Henry.

The Wozniaks are from the North Hammond area of Indiana, just across the border from Chicago. The photos were likely taken in Chicago or South Bend, Indiana.

—Thomas Rzonca  
Valparaiso, Indiana



# LONG ISLAND CHAPTER STUDEBAKER DRIVERS CLUB MEMBERSHIP APPLICATION

NAME: \_\_\_\_\_ Birthday (Mo/Day): \_\_\_\_\_  
 SPOUSE: \_\_\_\_\_ Birthday (Mo/Day): \_\_\_\_\_  
 ADDRESS: \_\_\_\_\_ Anniversary (Mo/Day): \_\_\_\_\_  
 PHONE: \_\_\_\_\_ CELL: \_\_\_\_\_  
 E-MAIL: \_\_\_\_\_

**STUDEBAKERS OWNED:**

YEAR	MODEL	BODY STYLE

To join or renew your membership, mail completed membership form, with membership fee payable to "LI Chapter SDC" to Frank Sammon, 105 Ridge Avenue, No. Great River, NY 11722-3430

**DUES:** Annual Dues are \$15.00. New members joining January – June: \$15.00, after July \$10.00.

**NOTE: YOU MUST BE A MEMBER OF THE SDC TO JOIN A LOCAL CHAPTER.**



OFFICIAL PUBLICATION  
OF THE LONG ISLAND  
CHAPTER, SDC

